



ABC KIMYA SAN. VE DIS TIC. A.S.

TECHNICAL DATA SHEET
TDS

ABC 700 ANCHORSET EPOXY

1 – DESCRIPTION

- ABC 700 Anchorset Epoxy is a rapid curing "one shot" two-part chemical anchoring cartridge system based on an epoxyacrylate resin in Styrene. Applied in one single action to produce a cost effective, tough, chemical resistant fixing.

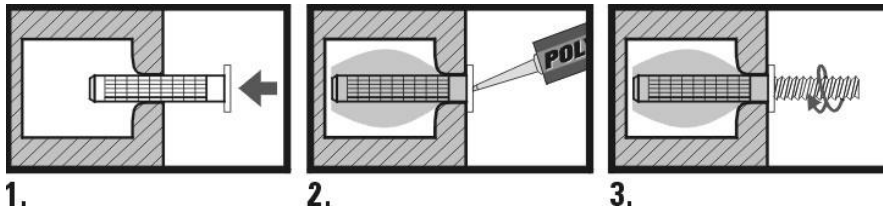
2 - APPLICATIONS

- ABC Anchorset Epoxy is suitable for fixing wall ties, starter bars, studs, bolts or large screws in a wide range of substrates including brick work, concrete, masonry, stone and PFA blocks. Hollow base materials can be securely fastened into by using ABC Anchorset Epoxy in conjunction with a sleeve or sieve. This material also capable of curing even on damp surfaces.

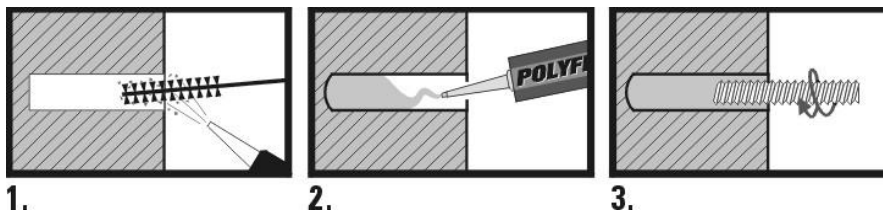
4 - APPLICATION METHOD

- Inject the product from the base of the hole until 2/3 full.
- Insert the element to be anchored rotating (if necessary, keep the position with a suitable device).
- Unscrew the mixing nozzle and replace cap.

Gözenekli yapılarda



Sert zeminlerde





ABC KIMYA SAN. VE DIS TIC. A.S.

TECHNICAL DATA SHEET
TDS

HARDENING TIMES

	<i>T° (°C)</i>	<i>TIME</i>
GEL TIME	5	14
	10	12
	20	8
	30	4
SETTING TIME	5	3
	10	2
	20	1
	30	45

5 - PACKAGING

- In 345 – 410 ml. Two component cartridges.

6 - SHELF LIFE

- 12 month in unopened packing in a cool, dry, storage place at temperatures between +5⁰C and +25⁰C

7 - NOTES

- Keep out of reach of children. Use in a well ventilated area. Don't smoke. Take the usual
- Industrial hygiene precautions.
- Wear gloves and safety goggles. Remove cured foam by mechanical means only, never burn away.

8 - SAFETY

- For information and advice on the safe handling, storage and disposal of chemical products, users shall refer to the most recent Material Safety Data Sheet containing physical, ecological, toxicological and other safety-related data.

9- TECHNICAL PROPERTIES



ABC KİMYA SAN. VE DİSTİC. A.Ş.

TECHNICAL DATA SHEET
TDS

Loading time	2 hours (23 °C , %50 nem)
Gel Time	6 min. (23 °C % 50 humidity
Specific gravity	1.70±3 kg/m ³
* Elastic Modulus	4206 N/mm ²
Compressive Strength	48 N/mm ² (ASTM 695)
Tensile Strength	: > 10 N/mm (ASTM 638

Concrete type	Anchor size mm	Hole diameter mm	Hole depth mm	Ultimate pull out kN
C20	20	26	120	37,0
	20	26	160	58,6
	20	26	200	52,5
	20	26	240	72,8
	20	28	120	43,3
	20	28	160	66,7
	20	28	200	72,9
	20	28	240	107,1
C20 (damp)	20	26	120	33,8
	20	26	160	78,8
	20	26	200	78,8
	20	26	240	74,3
C20	20	26	120	38,5
	20	26	160	35,5
	20	26	200	43,9
	20	26	240	44,7

10 - LEGAL NOTES

The information, and, in particular, the recommendations relating to the application and end-use of ABC KİMYA products, are given in good faith based on ABC KİMYA 's current knowledge and experience of the products when properly stored, handled and applied under normal conditions in accordance with ABC KİMYA 's recommendations. ABC KİMYA reserves the right to change the properties of its products.